

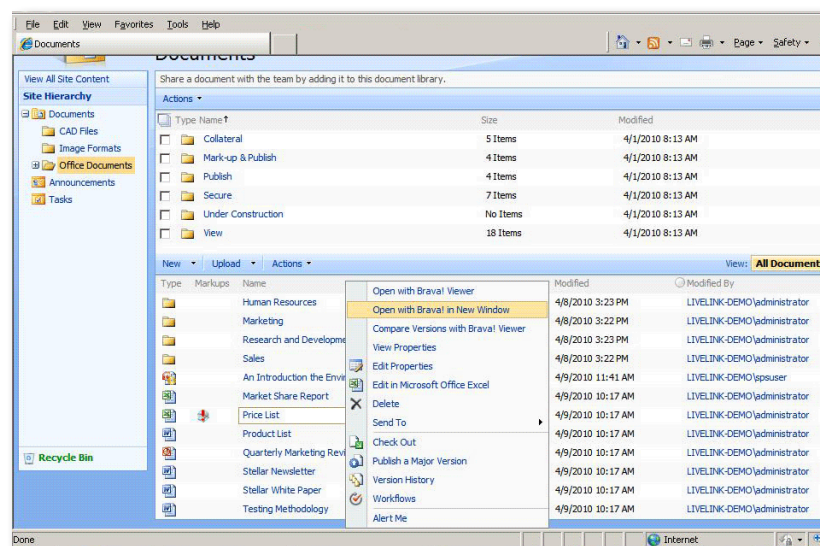
Brava!® for OpenText ECM - SharePoint Connector

View | Collaborate | Redact | Publish | Secure

The Brava!® Connector for OpenText SharePoint Services allows organizations to use Brava for OpenText ECM licenses to enable viewing, annotation and redaction on virtually any file stored in either SharePoint or Content Server through Microsoft's SharePoint Portal.

Brava, with its simple, easy-to-use interface allows large-scale deployments and rapid user adoption to become a reality in practically any business environment. Brava for OpenText ECM works with virtually any document type including Microsoft Office, PDF, CAD drawings and image files, thus eliminating the need to install the native application on every user's desktop.

Adding the Brava SharePoint Connector allows users to view and annotate documents, whether they're physically stored in SharePoint or in OpenText Content Server, through the SharePoint interface. Markups are saved with the document as a separate layer; when a document is archived from SharePoint to the OpenText archive server, the markups are archived along with the document. In addition, the markup layer can be fused with the document and published as TIFF, PDF or in Brava's portable, secure Content Sealed Format (CSF).



Launch Brava and view files in the SharePoint interface



What Our Customers Are Saying

“Reducing our environmental footprint is important. With Brava, we’re not physically moving documents and we’re not using all the paper to generate copies, so there’s a positive environmental impact.”

“Strategically, when it comes to future initiatives regarding our corporate document management system and handling of multiple formats, such as TIFF, PDF and others, including markup, we will look to Brava as a preferred choice.”

Languages:

Available in English, German, French, Spanish, Korean, Simplified Chinese, Japanese, Dutch, Brazilian Portuguese

For more information:

Contact your local OpenText Sales Representative or:

Mark Chamberlain
Informative Graphics Corp.
Work: 602-971-6061, ext. 127
Email: markc@infograph.com

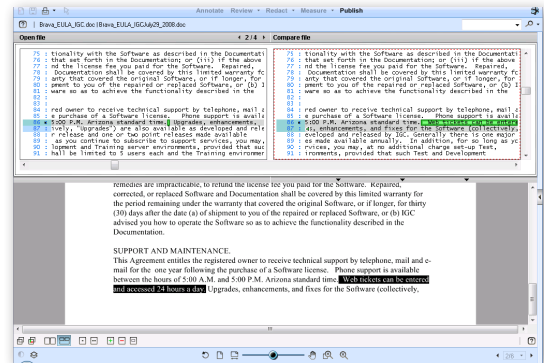


Informative Graphics Corp.
4835 E. Cactus Road Suite 445
Scottsdale, Arizona 85254-3546
o 602.971.6061 | f 602.971.1714
www.infograph.com

© Copyright 2012 Informative Graphics Corporation. Informative Graphics and Brava! are registered trademarks of Informative Graphics Corporation. All other company and product names are the property of their respective owners. BR-OT-SPC-02-10-12

Document Compare

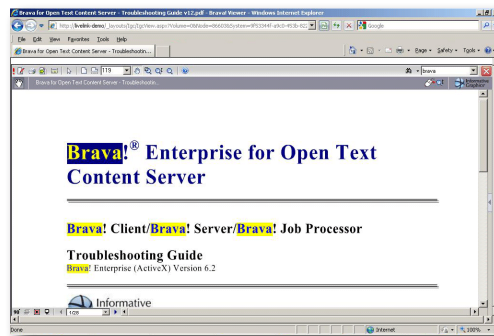
Compare different versions of a document or drawing with Brava’s built-in comparison tool—useful for comparing drawing and document revisions/versions and faxed versus signed contracts. Brava offers pixel-to-pixel and text comparison modes so users can choose the view best suited to their file type. Comparison views can also include annotations for easy change verifications, ensuring no changes are left unincorporated.



Use Brava to compare text from two Microsoft Word documents

Intelligent Redaction Tools

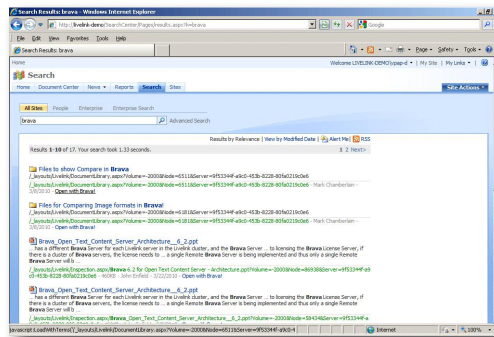
Brava’s redaction tools allow removal of sensitive information from documents, drawings and images, either automatically with intelligent pattern matching and text search or manually with area selection tools. Brava offers a redaction draft mode to accommodate review cycles; the ability to redact full pages rather than just selected areas; a filter capability to find redactions without reason codes (to address Freedom of Information requirements); and the ability to do partial redactions, useful for redacting all but the last four digits of a credit card or bank account number.



File loaded in Brava has search term highlighted

Search Term Highlighting

The Brava Connector also works with search results from either SharePoint or Content Server, allowing documents to be opened in Brava directly from the SharePoint search page. It also adds term-hit highlighting to the search terms found in the document.



Search for documents in SharePoint or Content Server, open them with Brava

Work in SharePoint Interface

When coupled with OpenText CLM Services for SharePoint, the connector allows organizations to leverage the investment they have made in Brava for Content Server functionality by enabling viewing, redaction and collaborative annotation capabilities for users who prefer to work in SharePoint’s interface.